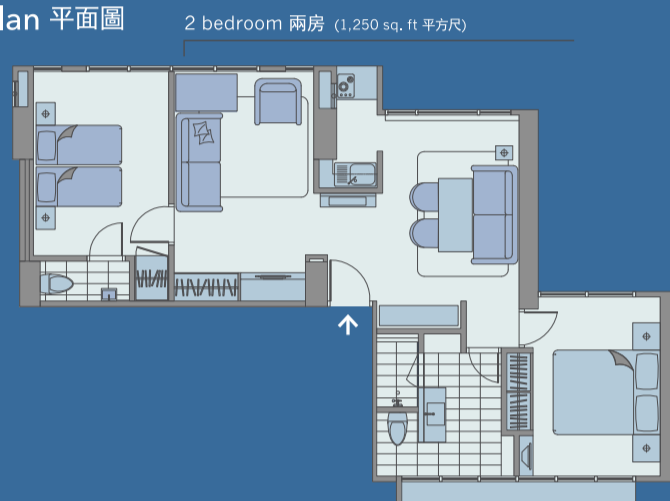
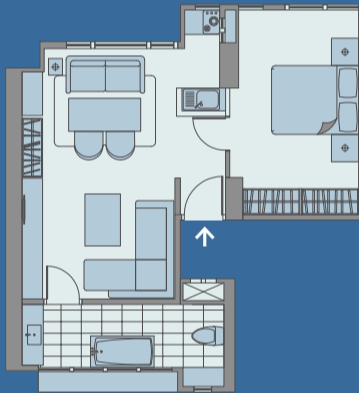


中環  
central  
沙瑪服務式公寓  
Premier serviced apartments

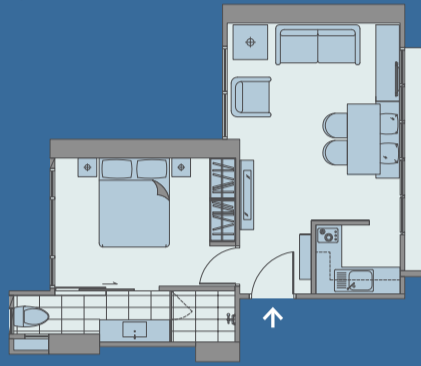
Floor Plan 平面圖



Luxury 1 bedroom 豪華一房 (1,000 sq. ft. 平方呎)



1 bedroom 一房 (750 sq. ft. 平方呎)



Studio 開放式套房 (500 sq. ft. 平方呎)



Disclaimer: All information contained herein is for reference only. It is subject to change without prior notice and does not form part of an offer or contract. 此圖說明書內之資料僅供參考之用，不構成任何合約之一部分，如有任何更改，恕不另行通知。

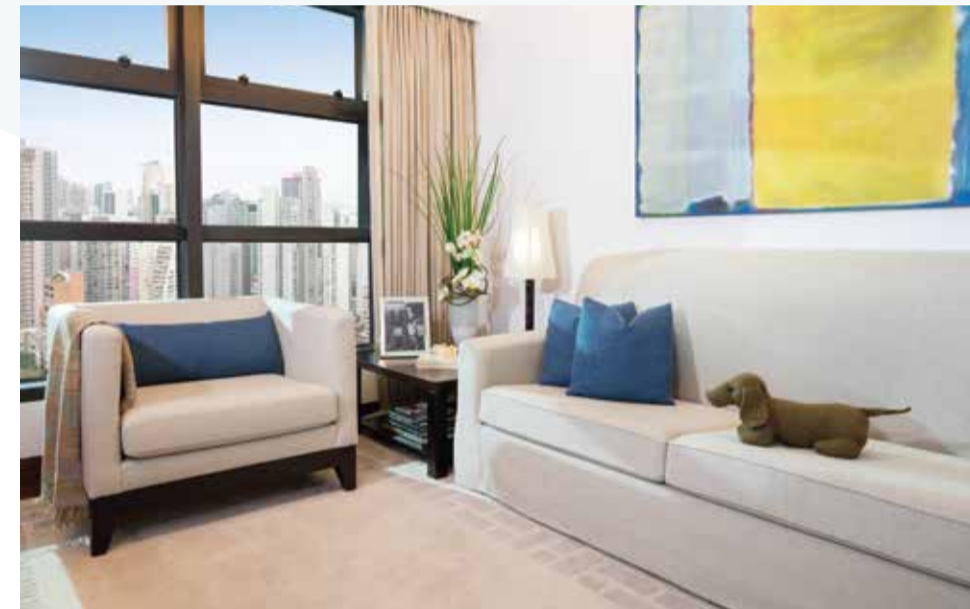


位於中環卑利街，為您提供56套別具時尚格調的服務式公寓，讓住客安居於中環的核心地帶，並締造完美最 vibrant neighbourhoods. Located in the Central district, our 56 chic contemporary serviced apartments provide calming retreats in the heart of the city's



Location Map 位置圖

香港中環  
Central, Hong Kong  
2/F, 26 Peel Street,  
車利街26號2樓  
電話: +852 2103 1713  
傳真: +852 2103 1700  
W 網址: www.shama.com  
For reservations 租務查詢:  
+852 3100 8555  
reservations.hongkong@shama.com  
An ONYX Brand



設備

- 莎瑪特製Slumber睡床配特柔軟床墊
- 入住時免費獲贈澳洲品牌沐浴用品
- 設備齊全的廚房
- Wi-Fi無線上網
- 多個國際電視頻道
- 電子保險箱
- 商務中心 - 附設蘋果電腦及打印設備
- 健身房 - 室內健身空間附設帶氧訓練器材

Features

- Shama Slumber bed with extra soft feather-top
- Complimentary Australian brand amenities upon check-in
- Fully equipped kitchenette
- WiFi internet access
- International TV channels
- Electronic safe
- Wired - business centre with iMac and printing machine
- Gym - in-house fitness room



Services

- Personalised maid service
- Towel and Linen change twice a week\*
- Professional laundry and dry cleaning services\*
- Self-service laundry facilities
- 24-hour security
- On-site management providing concierge services

\* For daily booking arrangement: Services are provided on a daily basis  
\* At applicable charge



服務

- 個性化房間清潔服務
- 每週兩次更換床上用品及毛巾\*
- 專業洗燙及乾洗服務\*
- 自助洗衣設備
- 24小時專業保安服務
- 禮賓及門房服務

\* 日租安排: 此項服務將會每日提供 \* 需額外收費



"No Boundaries" exclusive lifestyle programme to enrich tenants' social living which includes:

- Hood tour to introduce the essential amenities in the neighbourhood
- Exquisite recommendations to the hidden gems of the city
- Tenant activities

「尚明會」為住客提供各項配套，讓您盡快熟悉鄰近社區：

- 區域遊覽
- 生活指南推介介紹有關當地各式餐飲、宴會、購物、旅遊及休閒服務
- 定期住戶活動